

ivona

ARTIST / ARCHITECT

Ioana Urma
310 227 3352
El Segundo (LA), CA
ioana@ioanacolor.com
ioanacolor.com

INTRODUCTION

Ioana Urma is an artist and California registered architect with degrees from MIT and Cornell University in architecture and interior design.

She has a wide array of experience in architecture, graphic design, and art, which she wants to continue to combine on multifaceted creative projects.

Her projects have been recognized nationally by the Americans for the Arts, won international design competitions, been a semi-finalist in an NSF visualization competition, and been featured on TV in the news, in commercials, and on various TV shows.

Aside from practice, Ioana has also taught design and architecture at Otis College of Art and Design, Art Center College of Design, Roger Williams University, and Boston Architectural College.

Born in Romania, Ioana emigrated to LA as a child and moved to Boston as a teen. She has also lived in Ithaca (NY), Princeton (NJ), Durham (NC), Denmark, and Germany.

INTERESTED IN

EXPERIENTIAL + EDUCATIONAL DESIGN

SUCH AS

**GRAPHIC WALLS · EDUCATIONAL
EXHIBITS · BOOKS & PRINTED
MATERIALS · PATTERN DESIGN ·
THEATRICAL SETS · TEMPORARY
INSTALLATIONS · ON SCIENCE,
ENGINEERING, DESIGN, HISTORY,
ART · STOREFRONTS · SIGNAGE
& BANNERS · LANDSCAPES ·
INTERACTIVE ENVIRONMENTS ·
FOLLIES & SMALL STRUCTURES**

PART I

INDEPENDENT DESIGN WORK

All design work shown in this category is by Ioana Urma alone. Large art projects were painted and fabricated mostly by her, using fabricators for the metalwork, the industrial-scale sewing, laser cutting, CNC routing, large-scale printing, and some of the woodwork; and organizing teams to install.

18 YEARS OF INDEPENDENT DESIGN EXPERIENCE & EDUCATION

- 2003/04– GRAPHIC DESIGNER, ARTIST, CONSULTING ARCHITECT
- 2005/08, IOANA, El Segundo, CA and Waltham, MA
- 2008/03– Graphic design mostly on STEM topics, national public art projects,
- Present residential to urban-scale architecture design and consulting

- 2021/06– BOOK DESIGN STUDENT
- 2021/07 RISD, Providence, RI (online)
With veteran book designer and professor Doug Scott

- 1997/09– ARCHITECTURE GRADUATE STUDENT
- 2001/01 MIT (+Harvard), Cambridge, MA
Architecture and urban design projects, with a bit of landscape

- 1994/09– SPACE-USE ANALYST
- 1995/05 CORNELL CENTER FOR THE ENVIRONMENT, Ithaca, NY
Space-use analysis for the center’s relocation

- 1993/09– ARCHITECTURE STUDY ABROAD STUDENT
- 1994/05 DIS, Copenhagen, Denmark
Architecture and urban/landscape design projects

- 1993/06– INTERIOR & GRAPHIC DESIGNER
- 1993/08 HUM-EC ADMISSIONS OFFICE, Cornell University, Ithaca, NY
Complete demo-renovation-relocation, and letterhead design

- 1990/09– INTERIOR DESIGN UNDERGRADUATE STUDENT
- 1995/01 CORNELL UNIVERSITY, Ithaca, NY
Interior design and a few architecture and furniture projects,
from the perspective of human scale and experience

GRAPHIC CLIENTS

Iridescent, USC, Cornell University, Stanford University, KidWind, The Mission Productions for BravoTV, The Blue Heron Foundation, Long Beach Gas & Oil, MIT, New Generation Energy, Factual, Kaiser Permanente, The Romanian Cultural Institute NY

ARCHITECTURE & INTERIORS CLIENTS

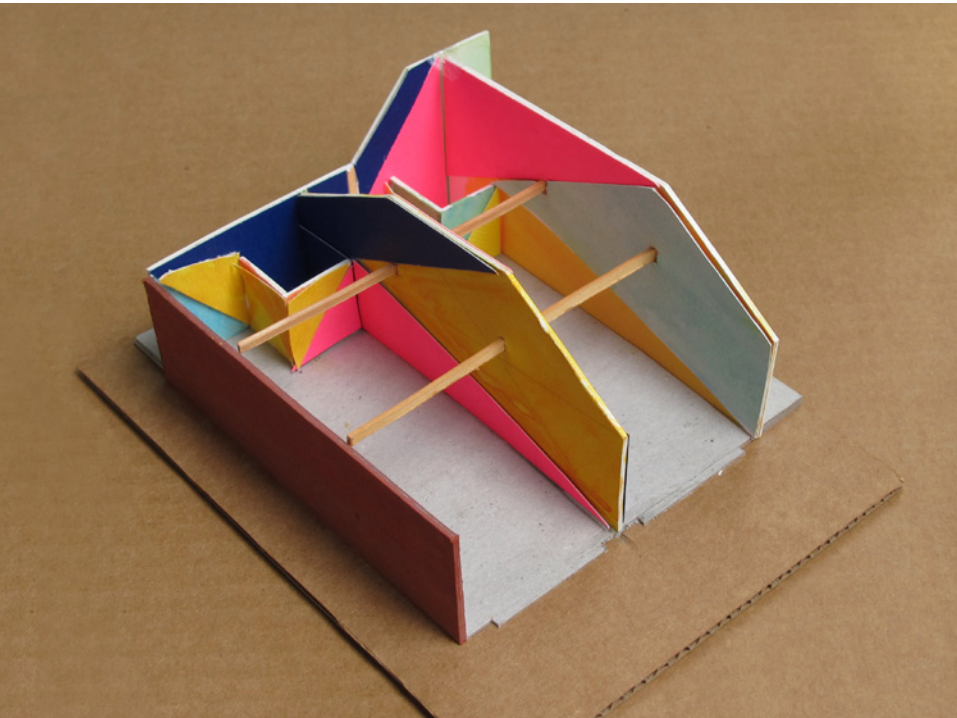
The Art Interactive, Totah Design, Perez Design Group, Iridescent, Cornell Center for the Environment, Cornell College of Human Ecology, The Jerde Partnership, Hopscape Design Studio

ART CLIENTS

The City of El Paso Museums and Cultural Affairs Department, ESMOA/ El Segundo Museum of Art, The Long Beach Redevelopment Agency, The Arts Council for Long Beach, Iridescent, Blankspaces, Hopscape Design Studio, Figment Boston, Figment San Diego, LA Works, Wallspace

**SPATIAL
GEOMETRIC
COLORFUL
IMMERSIVE
THEATRICAL**

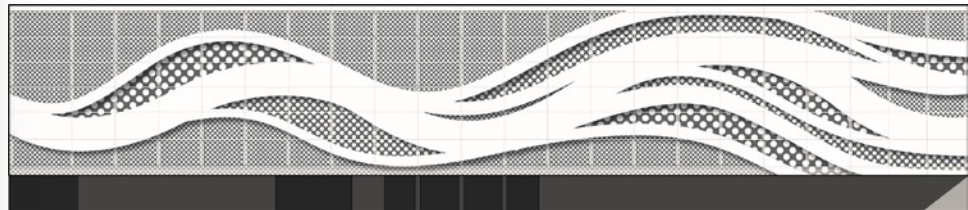
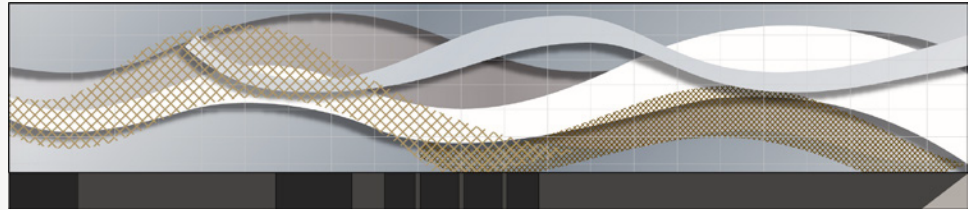
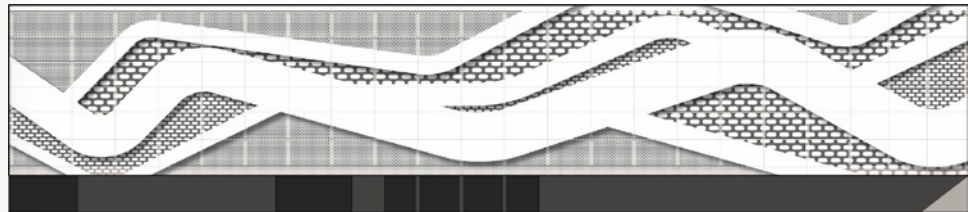
**CONCEIVED IN A 3D CONTEXT ·
SPATIALLY SCULPTURAL · DEEP ·
OF HARMONIOUS PROPORTIONS
· MINIMALIST · ORDERED · FUN
· BOLD · PLAYFUL · BRIGHT ·
FULL OF LIFE · INTERACTIVE ·
BASED ON HUMAN EXPERIENCE ·
SOMETIMES KINETIC · AROUSING
CURIOSITY · INVOLVING
FANTASY · MIXING SYMBOLISM**



FORCED PERSPECTIVE PAINT DESIGN

Iridescent's 2nd K-12 Science & Engineering Studios, Downtown Los Angeles, CA

To enliven and enlarge dark, narrow spaces, and contextualize the odd-shaped ceiling



RIVER THEME PARKING GARAGE SCREENS

LT Platinum, an LT Global Investment project, close to the Santa Ana River, Anaheim, CA

Parking garage is seen only from a distance, so graphically the gesture needed to be big



"CORRELATION COLLAGES"
SCIENCE & ENGINEERING MURAL

Iridescent's 1st K-12 Science & Engineering Studio,
 Downtown Los Angeles, CA

A collage of elements from the courses taught, suggesting relationships between things which might otherwise seem unrelated



WRIGLEY VILLAGE BOX-MURALS, 3D STUDIES

Three boxes along Pacific Avenue, Long Beach, CA
 For the Long Beach Redevelopment Agency

"2012 Public Art Year in Review" award, Americans
 for the Arts; designs come from earlier banner
 designs which community loved



"OSTRICH" INTERACTIVE INSTALLATION

Figment Boston, Wharf District Parks, Boston, MA

In festival photo essay by Samantha Laine, *The Boston Globe*, 7/2013; commentary on how we experience our surroundings while hiding behind digital devices



URBAN DEVELOPMENT OF ANCIENT CITY ZONE

Constanta (Black Sea Port), Romania

MIT MArch Thesis

Project based on intuitive analysis of urban spatial perception and complex local history



SCIENTISTS & MATHEMATICIANS PORTRAITS

From *Making Water Machines*, 2013;

Haciendo Máquinas Acuáticas, 2014

Book designer, illustrator, and co-author

Illustrations rather than photos used to be appear friendlier and be more cohesive



GALLERY STOREFRONT, SIGNAGE, LANDSCAPE

The Art Interactive Gallery – in modernist Josep Lluís Sert building – Cambridge, MA

INTERNATIONAL COMPETITION WINNER

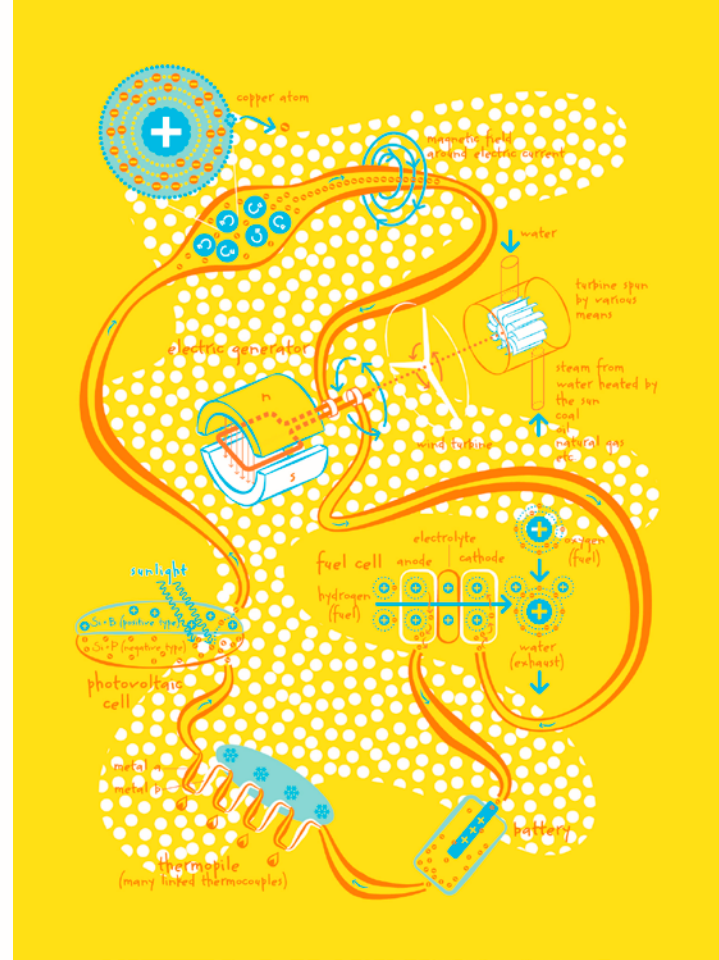
Facade provides light control and follows restrictive Historic and Signage Commissions' guidelines



"CORRELATION COLLAGES" SCIENCE & ENGINEERING MURAL

Iridescent's 1st K-12 Science & Engineering Studio, Downtown Los Angeles, CA

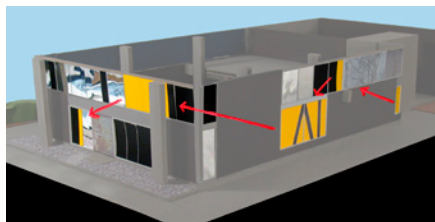
A collage of elements from the courses taught, suggesting relationships between things which might otherwise seem unrelated



ELECTRICITY T-SHIRT ILLUSTRATION

For very low income children in Iridescent's STEM programs

Graphic shows all the ways electricity is generated, including the much unknown thermopile



GALLERY STOREFRONT, SIGNAGE, LANDSCAPE

The Art Interactive Gallery – in modernist Josep Lluís Sert building – Cambridge, MA

INTERNATIONAL COMPETITION WINNER

Facade provides light control and follows restrictive Historic and Signage Commissions' guidelines



EXTERIOR DESIGN FOR PROPOSED

MOTEL CHAIN "THE MODERN"

Multiple locations in Southern California

For Totah Design

Studies looking at how to activate the facade economically with colors

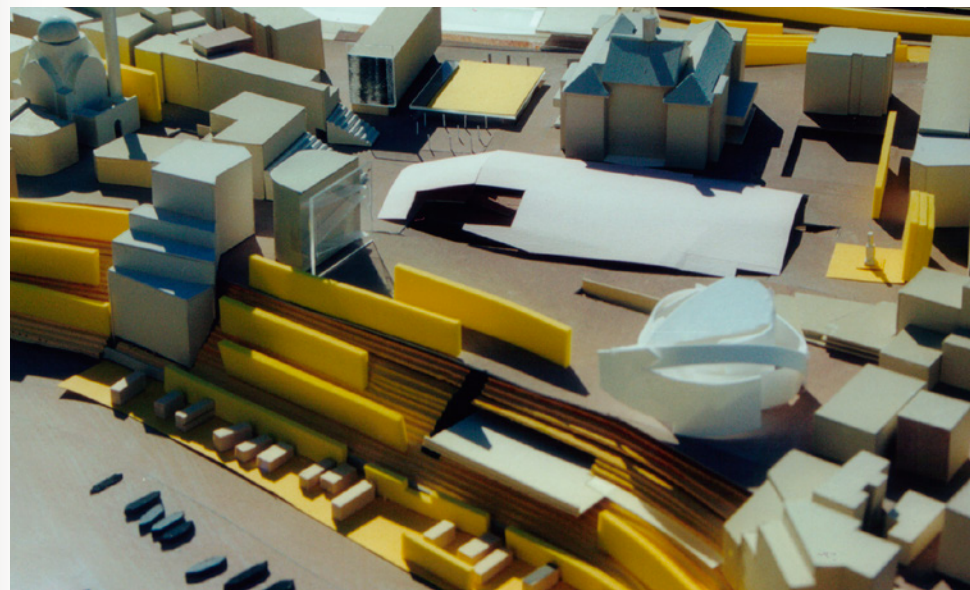


GALLERY STOREFRONT, SIGNAGE, LANDSCAPE

The Art Interactive Gallery – in modernist Josep Lluís Sert building – Cambridge, MA

INTERNATIONAL COMPETITION WINNER

Facade provides light control and follows restrictive Historic and Signage Commissions' guidelines



URBAN DEVELOPMENT OF ANCIENT CITY ZONE

Constanta (Black Sea Port), Romania
MIT MArch Thesis

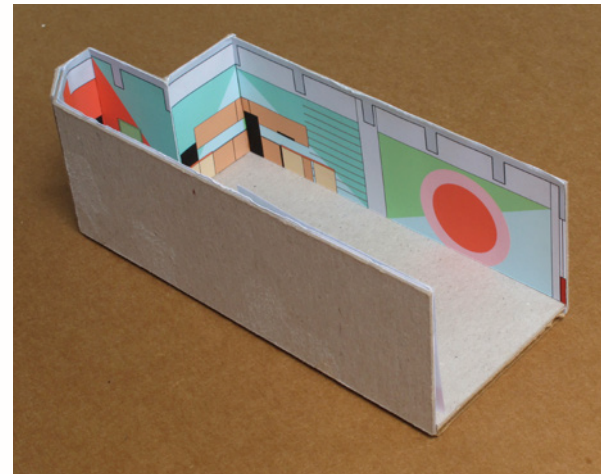
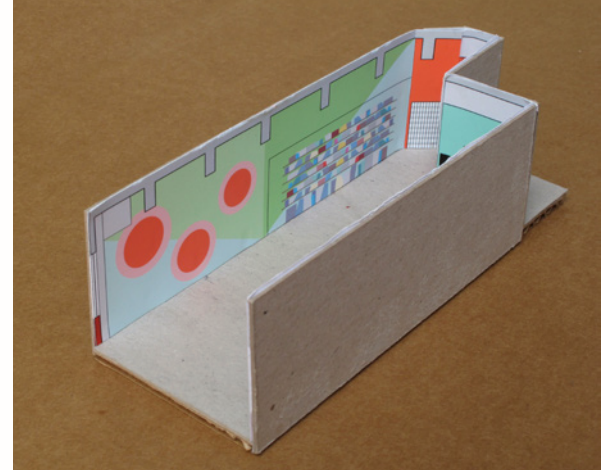
Project based on intuitive analysis of urban spatial perception and complex local history



FORCED PERSPECTIVE PAINT DESIGN

Iridescent's 2nd K-12 Science & Engineering Studios, Downtown Los Angeles, CA

To enliven and enlarge dark, narrow spaces, and contextualize the odd-shaped ceiling



SPRING-THEME OFFICE PAINT DESIGN

Iridescent HQ, Downtown Los Angeles, CA

Using geometry and colors to enlarge and brighten this north facing space (the office moved online after just starting renovations)



MOONRISE KINGDOM FILM OSCARS POSTER
Used by Focus Features to advertise film for Oscars
INTERNATIONAL DESIGN COMPETITION WINNER
(one of eight), 2012



COMPLEX TYPOGRAPHY BOOK DESIGN
Project for RISD book design course, 2021
Formatting my – many Romanian and mostly
vegetarian – recipes and cooking tips



WRIGLEY VILLAGE STREET BANNER

Pacific Avenue, Long Beach, CA
For the Arts Council for Long Beach

Drawn in the style of the 1920s–30s when the neighborhood was developed, this banner depicts native plants such as the California poppy



COVER + SEED DISPERSAL ILLUSTRATIONS

Nature's Machines, Technovation K-4 STEM activity book (work in progress)

Book designer, illustrator, and co-author

Using large simple geometric backgrounds to organize materia; typeface chosen for legibility and friendly aesthetic



KIDS' ENGINEERING STUDIO ILLUSTRATION

Opening image on Iridescent's Curiosity Machine online STEM education platform

Warm-colored perspective of an active workshop to make online learning feel more approachable



TV SHOW FOOD SCIENCE BACKDROP

"Blinded Me With Science," *Top Chef Masters*, BravoTV, aired 6/2011

Also exhibited at the Australian Academy of Science, 2011; the Oregon Museum of Science & Industry, 2012; during National Science Week in Australia, 2012; and on a *Warehouse 13* episode, 9/2012



"I IMAGE. I INVENT. I ENGINEER" BANNER

Slogan and banner design for Iridescent, K-12 STEM educational non-profit

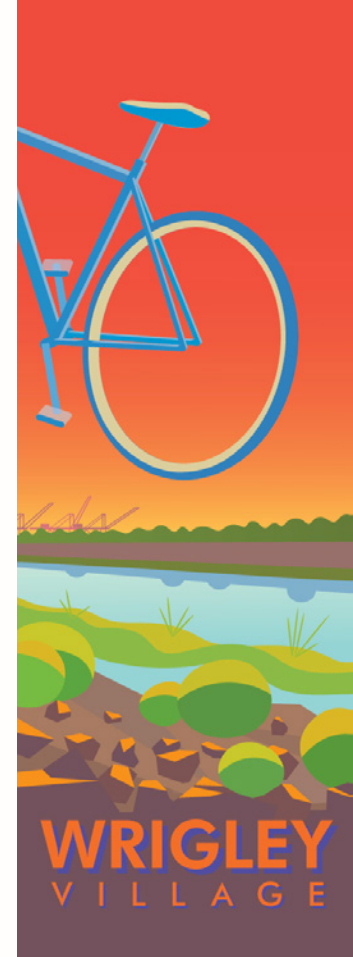
Featuring people from the actual after-school courses, so that potential attendees could relate



WRIGLEY VILLAGE STREET BANNER

Pacific Avenue, Long Beach, CA
For the Arts Council for Long Beach

Drawn in the style of the 1920s–30s when the neighborhood was developed, this banner depicts the bike path along the local LA River channel

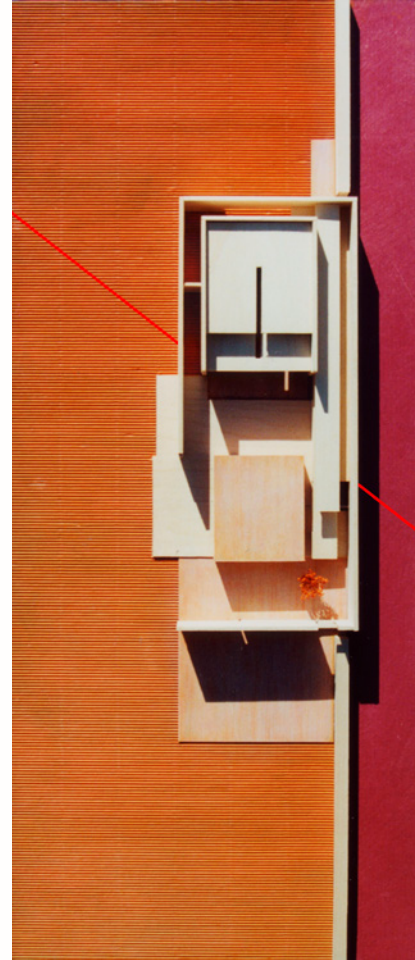




"POROUS PRISM" INTERACTIVE INSTALLATION

Chalk the Block, Cleveland Square Park, El Paso, TX

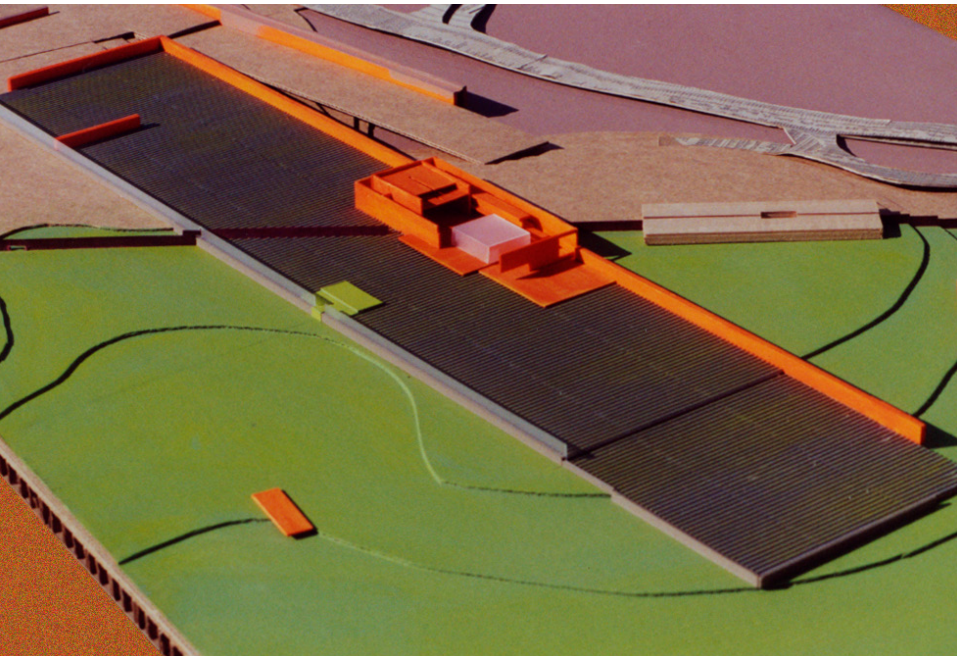
"California Artist Brings Beauty to Symbol of Border at Chalk the Block 2014," María Cortés González, *El Paso Times*, 10/2014; the project makes a celebratory zone of play out of a fence (a border), with desert flower colors



CROSS-BORDER BURIAL CHAPEL DESIGN

In cemetery across the Tijuana–San Diego, US–Mexico border, MIT MArch Studio

Reflecting on the artificiality of the border-line, and the dangers associated with crossing it, with colors and forms inspired by Mesoamerican temples, adobe houses, and Luis Barragán



CROSS-BORDER BURIAL ZONE WITH CHAPEL

Part of cemetery across the Tijuana–San Diego, US–Mexico border project, MIT MArch Studio

Reflecting on the artificiality of the border-line, and the dangers associated with crossing it, with colors and forms inspired by Mesoamerican temples, adobe houses, and Luis Barragán



"POROUS PRISM" INTERACTIVE INSTALLATION

Chalk the Block, Cleveland Square Park, El Paso, TX

"California Artist Brings Beauty to Symbol of Border at Chalk the Block 2014," María Cortés González, *El Paso Times*, 10/2014; the project makes a celebratory zone of play out of a fence (a border), with desert flower colors



"POROUS PRISM" INTERACTIVE INSTALLATION

Chalk the Block, Cleveland Square Park, El Paso, TX

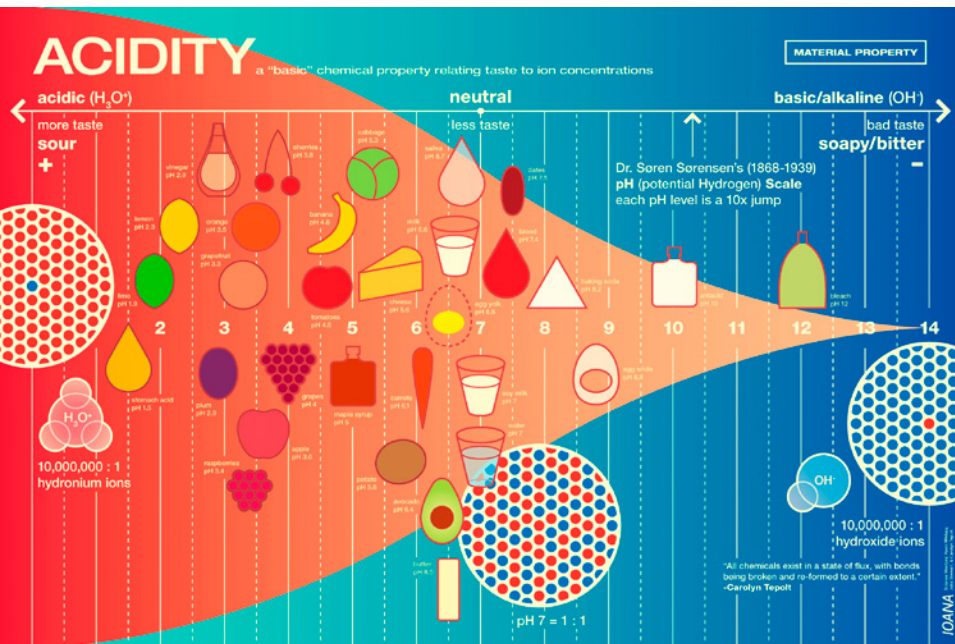
"California Artist Brings Beauty to Symbol of Border at Chalk the Block 2014," María Cortés González, *El Paso Times*, 10/2014; the project makes a celebratory zone of play out of a fence (a border), with desert flower colors



"TRAVELING ART HOUSE" INSTALLATION

Special invitation by the City of Santa Clarita to their Festival of the Arts, Santa Clarita, CA

Abstraction of a house, the resting place of art sold at festivals; designed without a beam across the front and to be assembled by 1-2 people quickly



TV SHOW FOOD SCIENCE BACKDROP

"Blinded Me With Science," *Top Chef Masters*, BravoTV, aired 6/2011

Also exhibited at the Australian Academy of Science, 2011; the Oregon Museum of Science & Industry, 2012; during National Science Week in Australia, 2012; and on a *Warehouse 13* episode, 9/2012



"MY MODEL BODY"

INTERACTIVE INSTALLATION

Figment San Diego, Chicano Park, San Diego, CA

Spatial installation featured in news segment on *KUSI San Diego*, 4/2013, using sarcasm as criticism of the modeling industry



EXHIBIT DESIGN ON THE PROCESS OF ILLUSTRATING SCIENCE CONCEPTS

Iridescent & ONR (US Navy Office of Naval Research)
Science & Engineering Studio, Bronx, NY, 10/2010

Design of four banners depicting the process – good
and bad – of developing science education graphics



WRIGLEY VILLAGE BOX-MURALS

Along Pacific Avenue, Long Beach, CA
For the Long Beach Redevelopment Agency

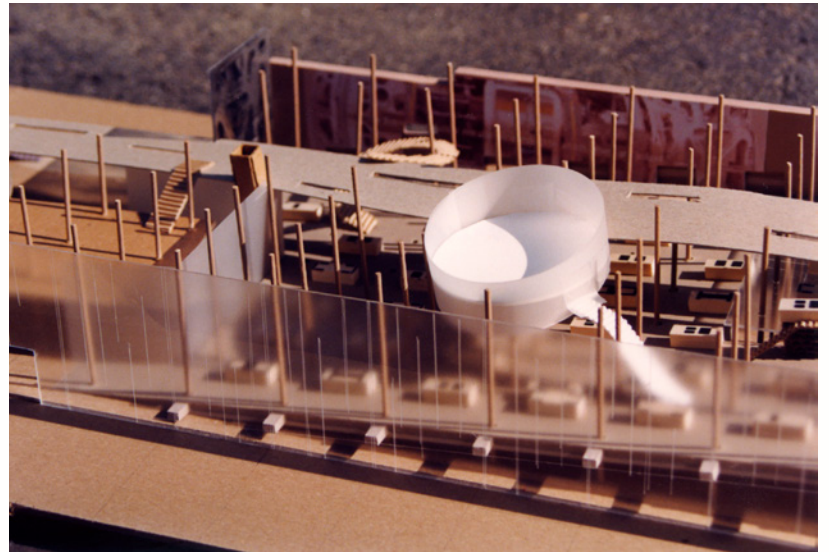
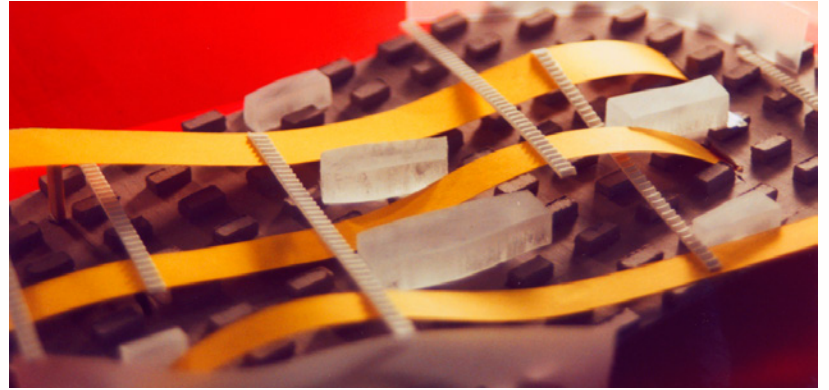
"2012 Public Art Year in Review" award,
Americans for the Arts; designs come from ear-
lier banner designs which the community loved

CURIOUS MACHINE

IDENTITY/BRANDING DESIGN

Iridescent's Curiosity Machine online STEM education platform

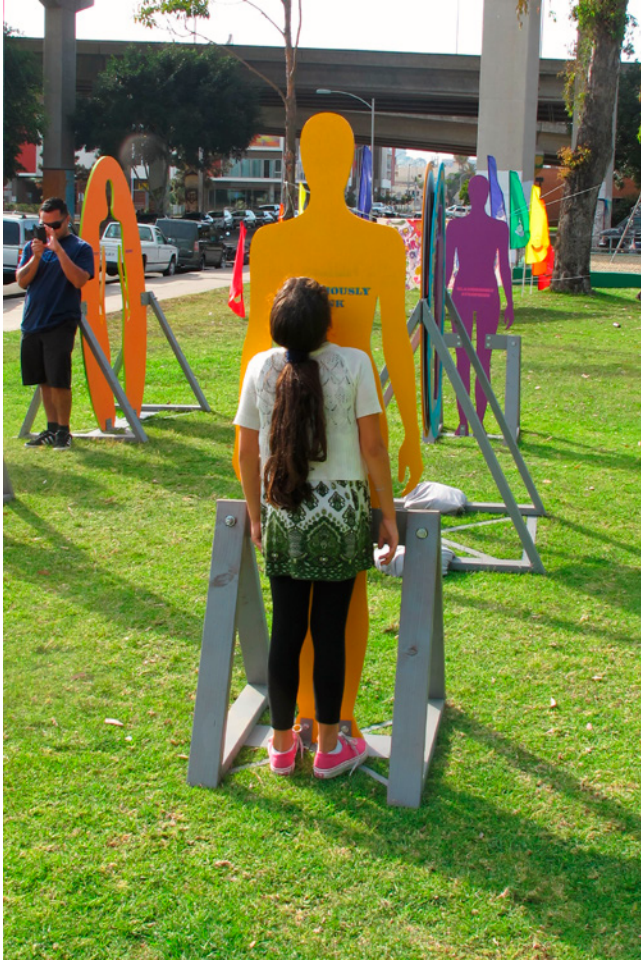
Warm-colors and friendly illustrations of tools used in building-making-experimenting define this logo for a children's online activity forum



CAR MUSEUM EXHIBIT CONCEPT

Working docks, South Boston, MA
MIT MArch Studio

Exhibit spaces float above a grid of car parts organized by components in one direction – tires, motor, body, windows, electrical, upholstery – and by time in the other direction, all on top of repair shops



"MY MODEL BODY"
INTERACTIVE INSTALLATION

Figment San Diego, Chicano Park, San Diego, CA

Spatial installation featured in news segment on
KUSI San Diego, 4/2013, using sarcasm as criticism
 of the modeling industry



"THE SMALLNESS OF MAN"
NATURE OBSERVATION PROPOSAL

Mountain Restoration Trust nature preserve,
 Calabasas, CA

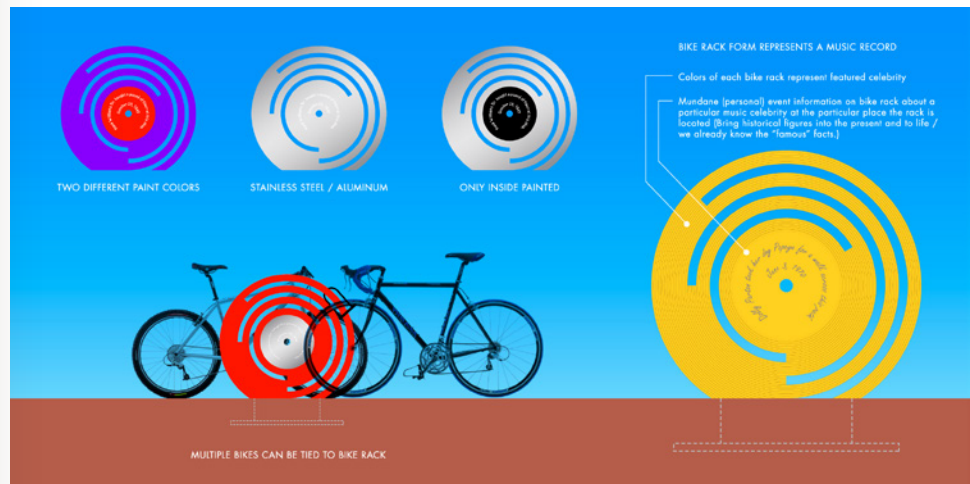
Signage location and design relating to the
 form of the thing they are describing



"WORLD OF ETHERS" GAME & LOGO DESIGN

Iridescent & Robot Super Brain children's physics app for iOS devices

A family of logos that each depict individual physics concepts, of which only the Fluid and Gravity Ether games were developed



NASHVILLE BIKE RACK PROPOSAL

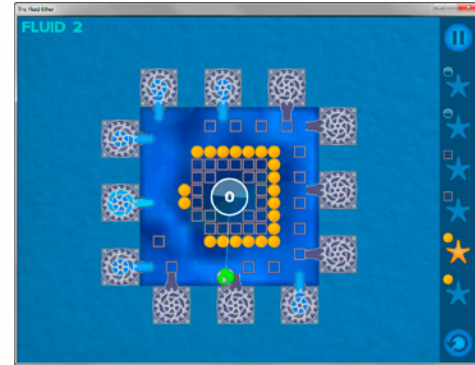
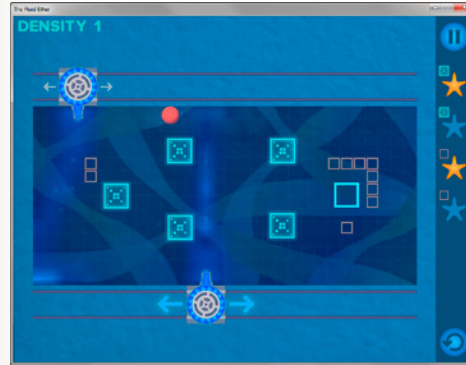
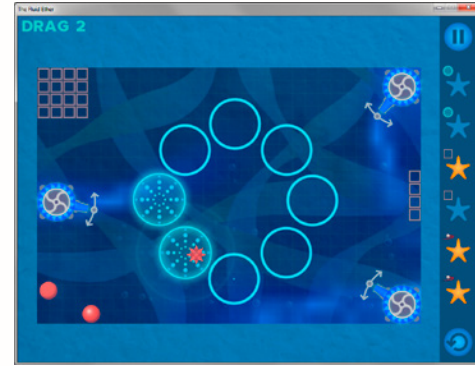
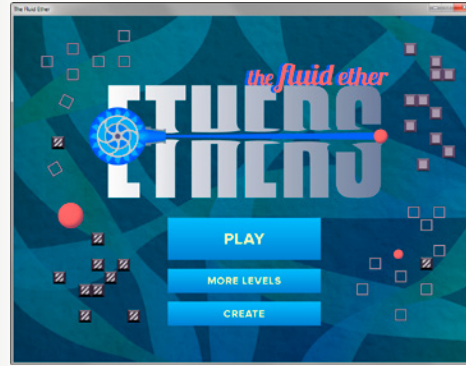
Metro Nashville Arts Commission, Nashville, TN

Shaped like records and located at places of interest related to musicians and the music industry



REFLECTIVE BUCKETS INSTALLATION SKETCH

Study for an immersive public art installation inspired by trip to Marfa TX: Donald Judd's sculptures + a trough filled with water reflecting the sky

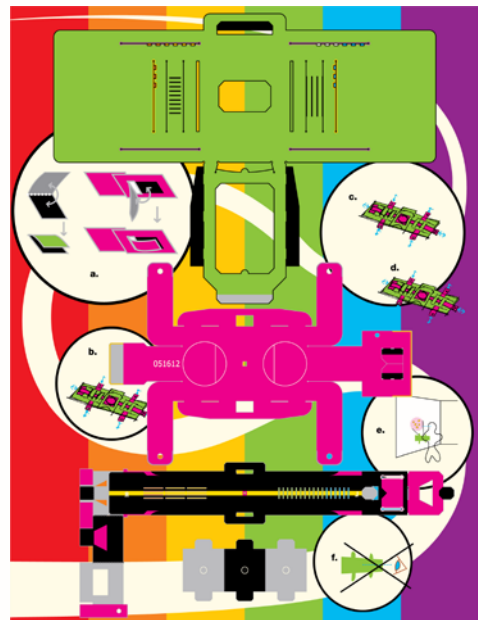
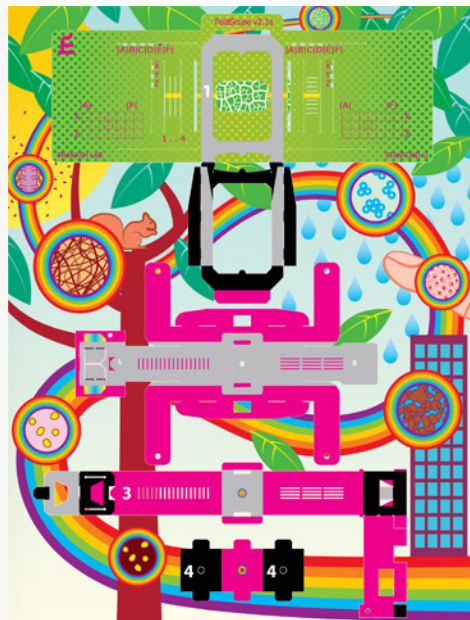


"FLUID ETHERS" GAME DESIGN

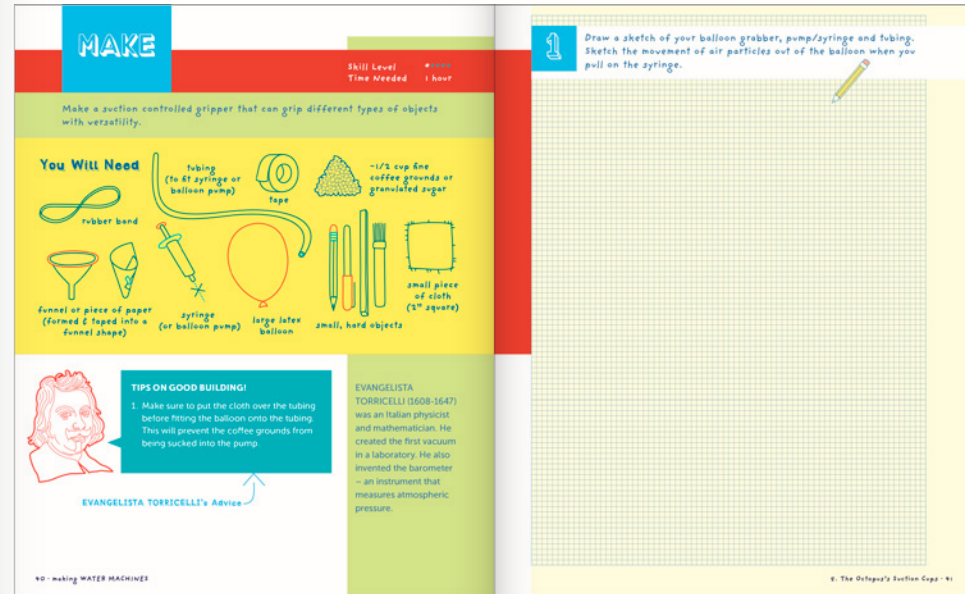
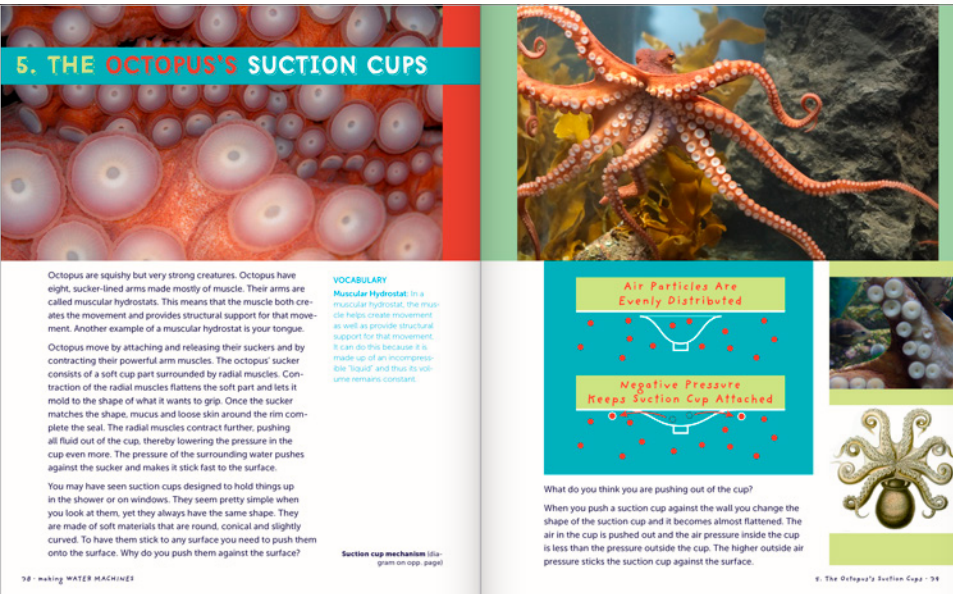
Iridescent & Robot Super Brain children's physics app for iOS devices

Using warm blues, a textured background with color depth, and friendly shapes to appeal to children and make the experience feel less digital

Both logos, Iridescent's developed years earlier, depict the programs' users – a child with a parent vs a teenage girl – and an activity or direction



This is a foldable microscope that is very cheap to make and distribute; the graphic design clarifies its assembly and depicts the things it can be used for



KIDS ENGINEERING ACTIVITY-BOOK DESIGN

Making Water Machines, 2013;

Haciendo Máquinas Acuáticas, 2014

Book designer, illustrator, and co-author

Design is in a "scrapbook-collage" format to tie the varied visual content together and make it fun for children to look through



STORYBOOK MURAL

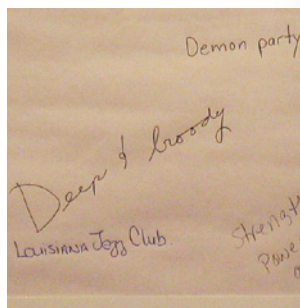
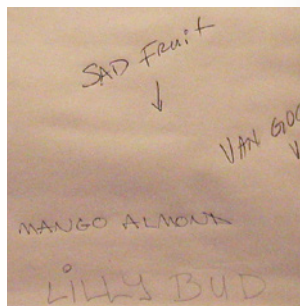
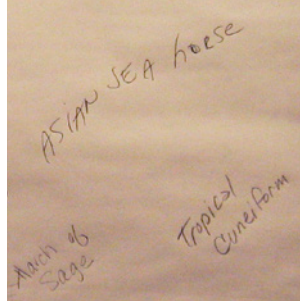
Kester Elementary School, Van Nuys, CA
For LA Works

School chose theme and books instead of
proposal for mural on local flora and fauna



"LANDSCAPES & PERSONALITIES: WHAT DO YOU SEE?" INTERACTIVE EXHIBITION
F.H. Goldwyn Hollywood Library, Los Angeles, CA

Solo exhibition featured on "LA This Week: City Beat," *LA Cityview* 35, 10/2009, of enlarged watercolor prints which viewers were invited to name



"MY MODEL BODY" INTERACTIVE INSTALLATION
Figment San Diego, Chicano Park, San Diego, CA

Spatial installation featured in news segment on *KUSI San Diego*, 4/2013, using sarcasm as criticism of the modeling industry



"OSTRICH" INTERACTIVE INSTALLATION

Figment Boston, Wharf District Parks, Boston, MA

In festival photo essay by Samantha Laine, *The Boston Globe*, 7/2013; commentary on how we experience our surroundings while hiding behind digital devices



"LANDSCAPES & PERSONALITIES: WHAT DO YOU SEE?" INTERACTIVE EXHIBITION

F.H. Goldwyn Hollywood Library, Los Angeles, CA

Solo exhibition featured on "LA This Week: City Beat," *LA Cityview* 35, 10/2009, of enlarged watercolor prints which viewers were invited to name



**"FREEDOM OF INFORMATION"
INTERACTIVE INSTALLATION**

Initially at Figment Boston, Wharf District Parks, Boston, MA; later in The North End Parks, Boston (above) and at the Shirley-Eustis House, Roxbury

Commentary on our trust of the Internet for learning, using the history of Boston as material



**"MY MODEL BODY"
INTERACTIVE INSTALLATION**

Figment San Diego, Chicano Park, San Diego, CA

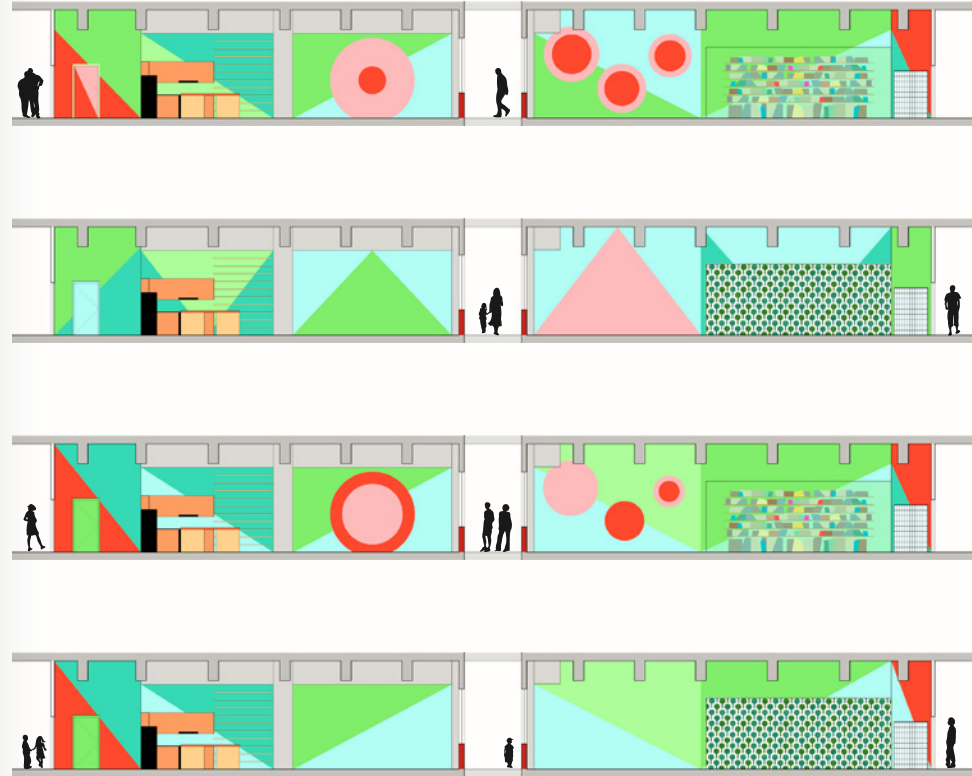
Spatial installation featured in news segment on *KUSI San Diego*, 4/2013, using sarcasm as criticism of the modeling industry



WRIGLEY VILLAGE BOX-MURALS

Along Pacific Avenue, Long Beach, CA
For the Long Beach Redevelopment Agency

"2012 Public Art Year in Review" award,
Americans for the Arts; designs come from earlier banner designs which the community loved



SPRING-THEME OFFICE PAINT DESIGN

Iridescent HQ, Downtown Los Angeles, CA

Using geometry and colors to enlarge and brighten this north facing space (the office moved online after just starting renovations)

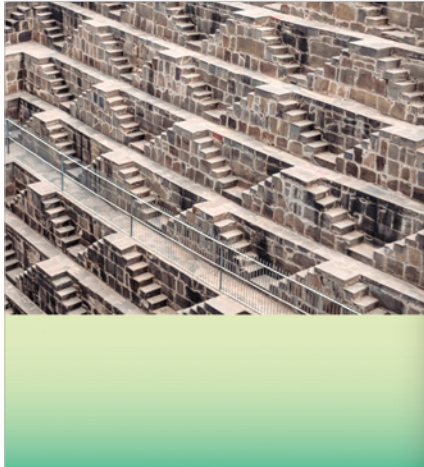
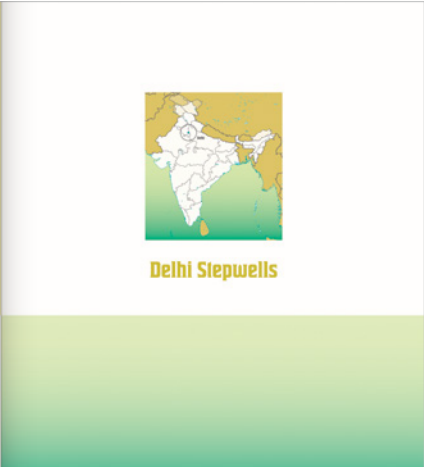
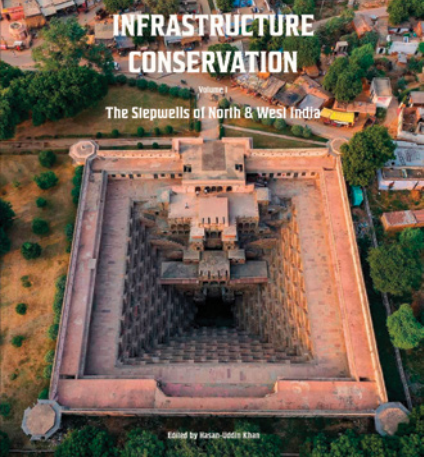
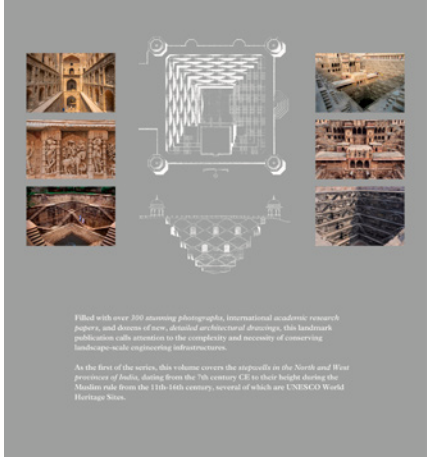


IMAGE AND TEXT BOOK DESIGN
Project for RISD book design course, 2021
Invented book on personal topic of interest
– the landscape-scale stepwells in India –
for the purpose of practicing a layout



**"FREEDOM OF INFORMATION"
INTERACTIVE INSTALLATION**

Initially at Figment Boston, Wharf District Parks, Boston, MA (above); later in The North End Parks, Boston and at the Shirley-Eustis House, Roxbury

Commentary on our trust of the Internet for learning, using the history of Boston as material



"LIFE OF HUMMINGBIRDS" ILLUSTRATION

For Iridescent & the Cornell Lab of Ornithology's "Build A Bird" educational app

Featured in a Samsung commercial and a Weeds TV show, 2012; exhibited at the Savannah College of Art and Design, GA; at the Museum of Natural History, Santa Cruz, CA, 2012+



WRIGLEY VILLAGE STREET BANNER

Pacific Avenue, Long Beach, CA
For the Arts Council for Long Beach

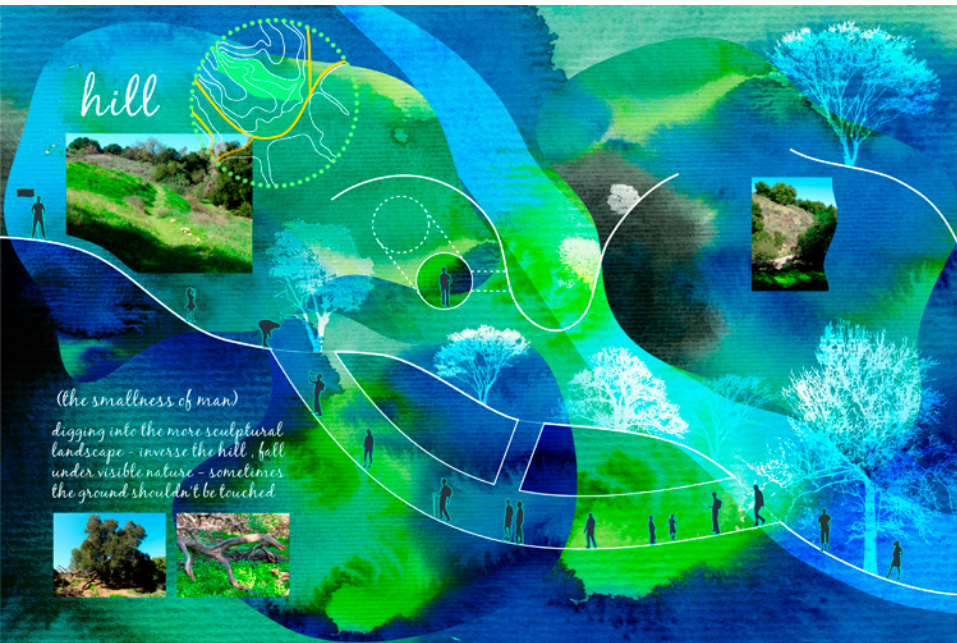
Drawn in the style of the 1920s–30s when the neighborhood was developed, this banner depicts the Tudor architectural style that is prevalent throughout the village



"THE KISS"/MY PARENTS KISSING

Accepted to the "Storefront" program as installation, Seattle, WA (lost funding); submitted to the Billboard Creative, Los Angeles, CA (above)

Playing on the idea of fame by putting my parents' intimate embrace up on a billboard



"THE SMALLNESS OF MAN"

NATURE OBSERVATION PROPOSAL

Mountain Restoration Trust nature preserve,
Calabasas, CA

A Jules Verne-type sculptural proposal to
reverse the hill, to be inside rather than on
top of the landscape



COVER OPTION FOR NATURE

To promote a featured article by the Prakash Lab at
Stanford University

The image is a symbolic representation of the
surface-tension study entitled "Dancing Droplets"



"LIFE OF HOUSE SPARROWS" ILLUSTRATION

For Iridescent & the Cornell Lab of Ornithology's
"Build A Bird" educational app

Exhibited at Galeria Tonantzin, San Juan Bautista,
CA, 2011; at the Savannah College of Art and
Design, GA, 2012; and at the Museum of Natural
History, Santa Cruz, CA, 2012



WRIGLEY VILLAGE BOX-MURALS

Along Pacific Avenue, Long Beach, CA
For the Long Beach Redevelopment Agency

"2012 Public Art Year in Review" award,
Americans for the Arts; designs come from ear-
lier banner designs which the community loved



PLAY HANDBALL/DODGEBALL MURALS

Kester Elementary School, Van Nuys, CA
For LA Works

Encouraging kids to be active; a tribute copy was painted by "Kids Hope" at Eagle Rock Elementary School, Los Angeles, CA; and another version is planned for 3rd Street Elementary, Los Angeles, CA



WEARABLE SCIENCE EDUCATION

For Iridescent, K-12 STEM education non-profit

Making science seem easy and accessible by breaking down complex concepts on a T-shirt; featured here are Electricity, the Reynolds Number, and the process of the MRI Scan



Q: Sir, do you support the return of more than 600,000 refugees currently in Serbia to Croatia and Western Bosnia?

A: Well, there's a balance now in those regions and we wouldn't want to upset that balance.

-Dutch Foreign Minister van Aartsen
18 april 1999

We also have to take this moment
once again TO HAMMER HOME
to all the children of America
THAT VIOLENCE IS WRONG.

-President Clinton, 21 april 1999

NATO IS RUNNING A PROPAGANDA CAMPAIGN,
there's no question about that.
HERE HAVE BEEN LOTS OF DISCREPANCIES
IN THE OFFICIAL STORY,
but what's interesting is that until now
there has been amazingly little scrutiny of the story

-Robert Hayden, Director, Univ. of Pittsburgh
Center for Russian and East-European Studies

LAUNDRY PEACE

Public art installation, throughout MIT
MIT Graduate Public Art Studio

"The Writing on the Wall," Kris Schnee, *The [MIT] Tech*, 5/1999; on the use of violence to establish peace and biases in media coverage, during the NATO bombing of the former Yugoslavia



"POROUS PRISM" INTERACTIVE INSTALLATION

Chalk the Block, Cleveland Square Park, El Paso, TX

"California Artist Brings Beauty to Symbol of Border at Chalk the Block 2014," María Cortés González, *El Paso Times*, 10/2014; the project makes a celebratory zone of play out of a fence (a border), with desert flower colors, and blue light at night



"MAKING A QUICHE" SOUND INSTALLATION

"Experience 39: EAT," ESMOA, El Segundo, CA

Articles with photos in *El Segundo* magazine, 4/2019, and in the Bulgarian art journal *Artizania*, 9/2019; general exhibit press in LA Times 2/2019; sound installation examines the human experience of the relationship between food and numbers



"LIFE OF BARN OWLS" ILLUSTRATION

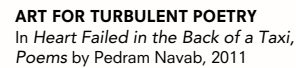
For Iridescent & the Cornell Lab of Ornithology's "Build A Bird" educational app

Featured in the pilot *Double-Decker* and a *Weeds* TV show, 2012; exhibited at the Savannah College of Art and Design, GA; at the Museum of Natural History, Santa Cruz, CA, 2012+

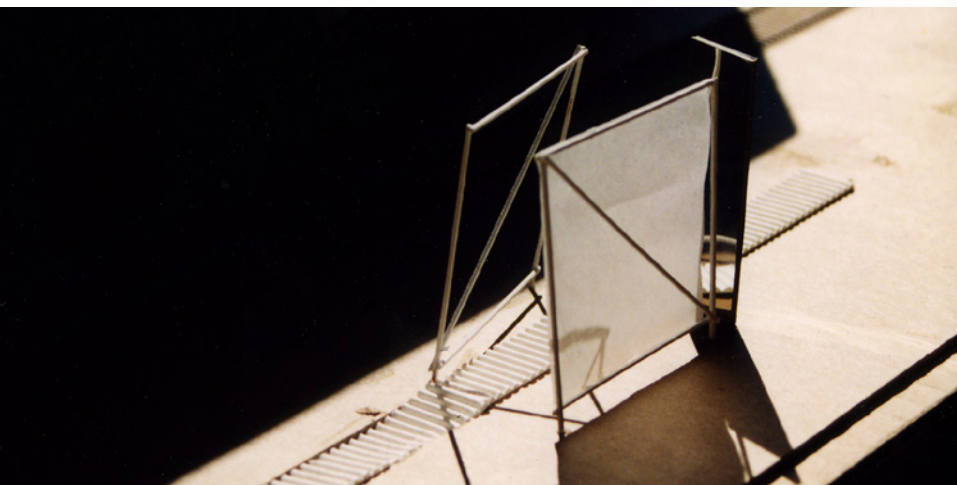


Played at Meiji University, Tokyo, Japan, 8/1999
MIT-Japan Abroad Program

Collage recording of the chaotic sounds of Tokyo overlapped with personal poetic reflections



Featured in an Adidas commercial, 2013;
the sumi-ink paintings embody the dark
and turbulent nature of the poems



"FLOOD. SEE. NOTHING."

SOUND INSTALLATION PROPOSAL

Train tracks off of Mass Ave, MIT
MIT Graduate Public Art Studio

Romantic steam-train sounds emanating from train tracks, with possible sculpture (MIT & Cambridge did not grant permission citing danger to traffic)

Ven y aprende ciencia e ingeniería en nuestro taller de ingeniería! Cursos prácticos de ciencias impartido por ingenieros que han tenido 16 semanas de entrenamiento, ilustran las aplicaciones del mundo real de los principios de la física.

iridescent
<http://iridescentlearning.org>

Bootcamp de Ingeniería de Verano



PHOTOCOPIABLE FLYER

Spanish version, for Iridescent K-12 STEM education non-profit

Diagrams developed for different projects – seen here in the background – became, over time, part of the non-profit's identity

ARCHITECTURE WORK AT OTHER FIRMS

Ioana Urma worked as designer, technical consultant, and/or PM on the following residential and commercial architecture projects, personally managing projects up to \$13M, leading teams, and coordinating with consultants, subs, and fabricators. (Note: most photographs and all 3D renderings are by others.)

16 YEARS OF EXPERIENCE ON OTHER FIRMS’ ARCHITECTURE PROJECTS

- 2018/08– ARCHITECTURE TECHNICAL CONSULTANT
- 2021/03 THE JERDE PARTNERSHIP, Los Angeles, CA
Very large mixed-use projects in China and Malaysia
- 2014/02– CONSULTING DESIGN PRINCIPAL
- 2018/01 HOPSCAPE DESIGN STUDIO, Los Angeles, CA
(A subsidiary of LT Commercial Real Estate Ltd, Hong Kong)
Very large mixed-use projects in Southern California and China
- 2004/11– SENIOR DESIGNER + SUSTAINABILITY MOTIVATOR
- 2008/05 THE JERDE PARTNERSHIP, Venice, CA
Very large mixed-use projects in Los Angeles, San Diego, Las Vegas, Dubai, Qatar, and Romania
- 2004/03– ARCHITECTURE DESIGN + TECHNICAL CONSULTANT
- 2004/08, CROSBY SCHLESSINGER SMALLRIDGE, Boston, MA
- 2005/08 GUSTAFSON GUTHRIE NICHOL, Seattle, WA
Steel pergolas and park details, the North End Parks, Boston, MA

- 2001/05– ASSOCIATE
- 2003/11 MARYANN THOMPSON ARCHITECTS, Cambridge, MA
Residential and institutional projects in Greater Boston and on Martha’s Vineyard
- 1996/08– ARCHITECTURAL DESIGNER
- 1997/07 ROBERT CERUTTI ARCHITECT, Princeton, NJ
Institutional and residential projects in New Jersey
- 1996/01– ARCHITECTURAL DESIGNER
- 1996/07 ARCHITECTURAL DESIGN GROUP, Durham, NC
Golf clubhouses in North Carolina and Florida
- 1995/05– ARCHITECTURAL DESIGNER
- 1995/12 IMAI KELLER MOORE ARCHITECTS, Watertown, MA
Residential and institutional projects in Boston and Cape Cod



MIXED-USE COMPLEX, SHAOXING, CHINA

THE JERDE PARTNERSHIP

Two shopping centers – one outdoor, one indoor – a park between, and three residential towers above

ARCHITECTURE TECHNICAL CONSULTANT:

Developed the design through wall section and constructability studies (DD)



COMMERCIAL CENTER, GUANGZHOU, CHINA

THE JERDE PARTNERSHIP

Three-story retail project with IMAX theater and office tower

ARCHITECTURE TECHNICAL CONSULTANT:

Developed the design through plan, elevation, and section constructability studies (SD-DD)



MIXED-USED TRANSIT LINK, BEIJING, CHINA

THE JERDE PARTNERSHIP

9-story (7 above + 2 under) retail podium, office and residential towers, and regional transit links

ARCHITECTURE TECHNICAL CONSULTANT:

Developed the design in plan and through detailed section studies (SD-DD)



TANGSHAN WESTRAIL CITY, HEBEI, CHINA

HOPSCAPE DESIGN STUDIO

1.1 million sqm mixed-use center

CONSULTING DESIGN PRINCIPAL: Designer and coordinator on fast-tracked project from end of DD through CA (construction), team leader



HANDAN GATEWAY CITY, HEBEI, CHINA

HOPSCAPE DESIGN STUDIO

300,000 sqm, 5-level commercial base plus office and hotel towers, with mandated historic aesthetic

CONSULTING DESIGN PRINCIPAL: Project designer and construction phase coordinator, team leader (SD-CA)



LT PLATINUM, ANAHEIM, CA

HOPSCAPE DESIGN STUDIO

500,000 sf commercial base with 3-story townhomes, plus hotel, office, and residential towers

CONSULTING DESIGN PRINCIPAL: Technical guide, designer for residential+, and researcher of entertainment/leisure feasibility (Concept-SD)



NOHO COMMONS, NORTH HOLLYWOOD, CA
THE JERDE PARTNERSHIP
70,000 sf neighborhood retail center

SENIOR DESIGNER: Designer on end of CDs (construction documents) through permitting and construction in CA



PERGOLAS+, NORTH END PARKS, BOSTON, MA
GGN & CSS Landscape Architects
Parks sit on top of Big Dig highway tunnels

ARCHITECTURE DESIGN + TECHNICAL CONSULTANT: Developed detailed, budget-controlled design of complex urban-scale steel pergolas (DD-CD), and studied stone paving



VACATION HOUSE, MARTHA'S VINEYARD, MA
MARYANN THOMPSON ARCHITECTS
3,500 sf summer residence

ASSOCIATE, ARCHITECTURAL DESIGNER:
Half of a two-person design/PM team, from SD
(schematic) to start of CA (construction)



PRIVATE RESIDENCE, BELMONT, MA
MARYANN THOMPSON ARCHITECTS
8,000 sf steel and wood structure

ASSOCIATE, ARCHITECTURAL DESIGNER:
Half of a two-person design/PM team, from DD
(design development) through CA (construction)



VACATION HOUSE, MARTHA'S VINEYARD, MA
MARYANN THOMPSON ARCHITECTS
3,500 sf summer residence

ASSOCIATE, ARCHITECTURAL DESIGNER:
Half of a two-person design/PM team, from SD (schematic) to start of CA (construction)



RESIDENTIAL COMPLEX, WEST YARMOUTH, MA
IMAI KELLER MOORE ARCHITECTS
New human-scaled retreat and historic lighthouse renovation in Cape Cod

ARCHITECTURAL DESIGNER: Half of a two-person design team, from DD (design development) through CDs (construction documents)

